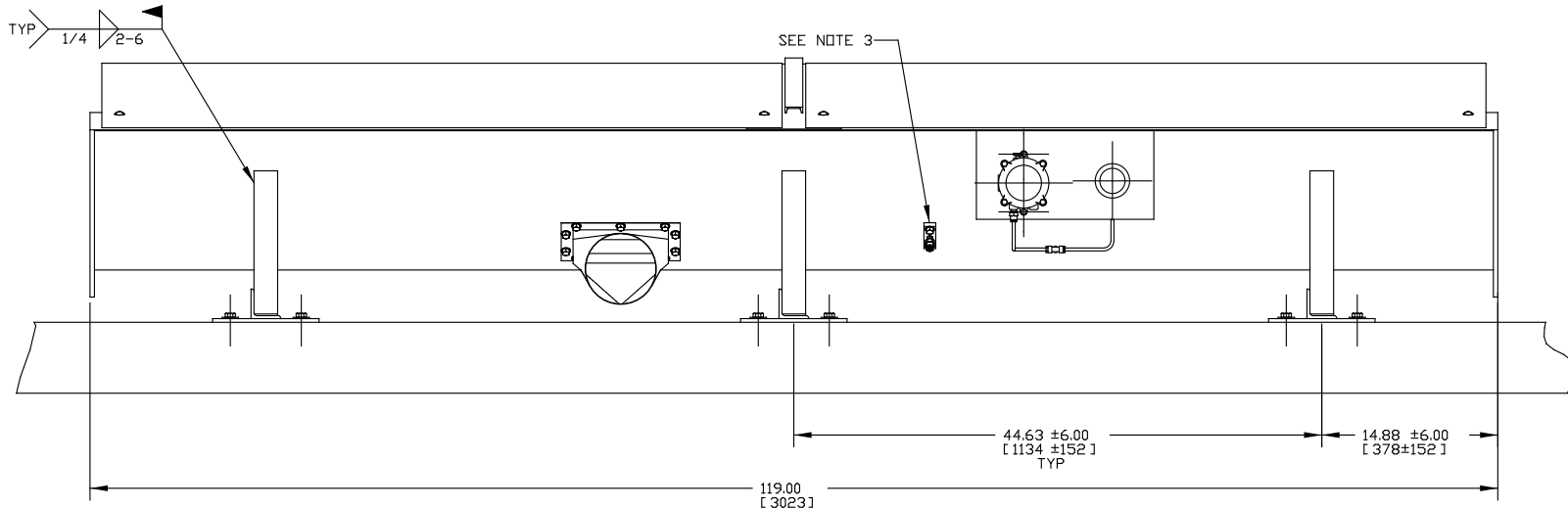
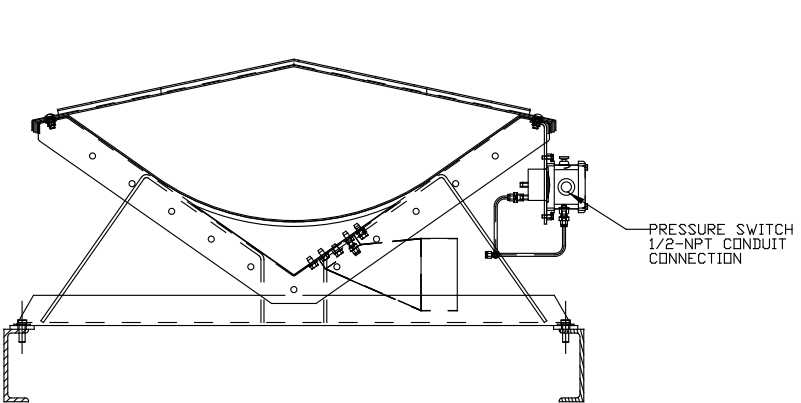
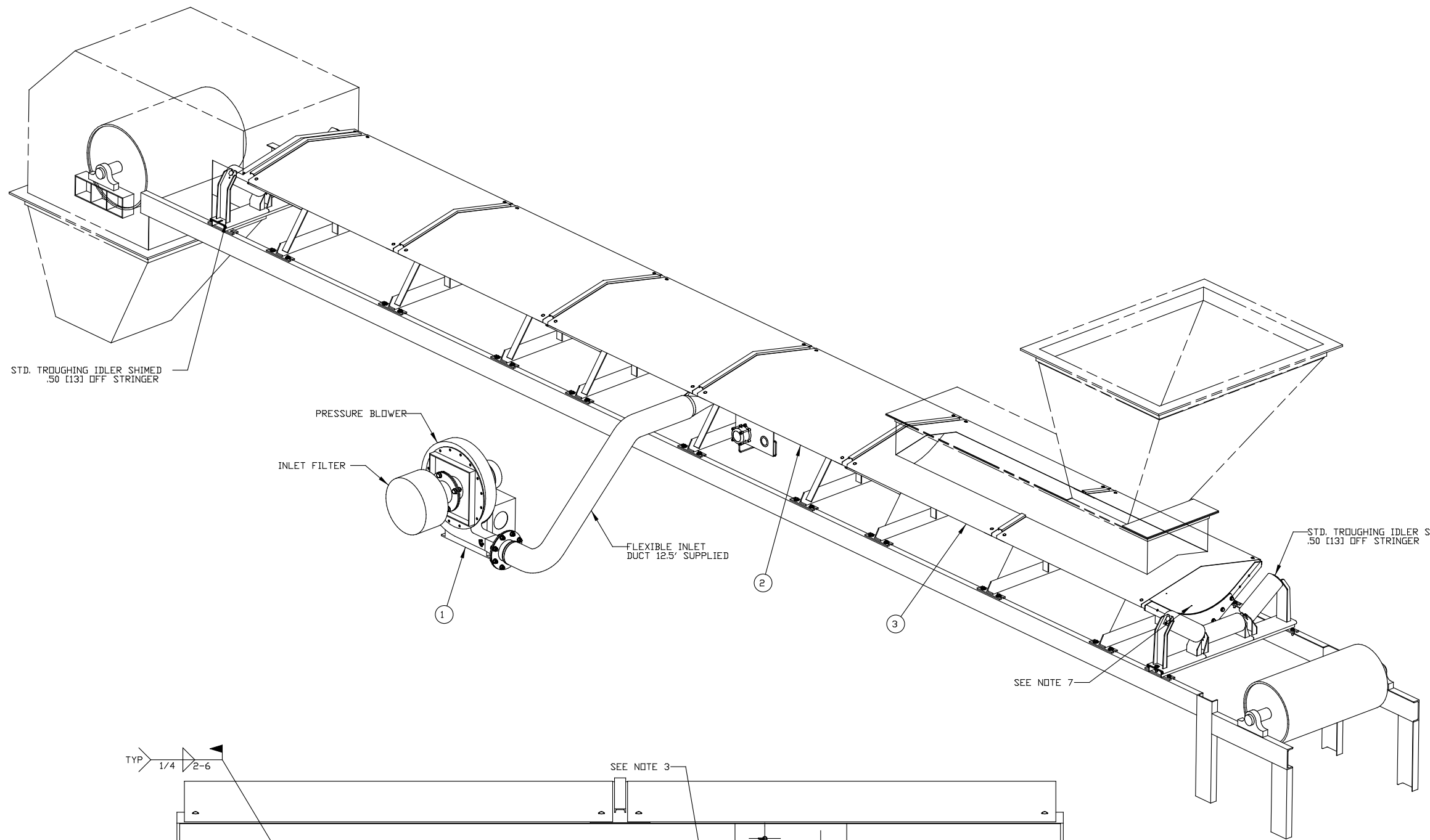


ITEM	QTY.	DESCRIPTION	PART NUMBER
1	1	PRESSURE BLOWER ASSEMBLY	36689-XXXX
2	1	INLET PLENUM ASSEMBLY	36630-XXXXXXA
3	2	PLENUM ASSEMBLY	36630-XXXXXX

SEE NOTE 7

- NOTES:
- 1) ALL DIMENSIONS ARE GIVEN IN INCHES [MM].
 - 2) ALL DIMENSIONS ARE FOR REFERENCE ONLY.
 - 3) FIELD LOCATE AND INSTALL PRESSURE SWITCH BULKHEAD FITTING IN A CONVENIENT LOCATION.
 - 4) PRESSURE SWITCH IS TO BE WIRED INTO THE CONVEYOR DRIVE MOTOR CIRCUIT TO ALLOW START-UP OF DRIVE MOTOR AFTER PRESSURE BLOWER HAS STARTED AND PLENUM HAS PRESSURIZED TO THE PRESSURE SETTING ON THE PRESSURE SWITCH.
 - 5) PRESSURE SWITCH AND PRESSURE BLOWER ARE EXPLOSION PROOF AND CAN BE INSTALLED IN EXPLOSIVE ATMOSPHERES.
 - 6) PLENUM SUPPORT BRACKETS TO BE FIELD LOCATED AND WELDED TO PLENUM.
 - 7) FINAL INSTALLATION REQUIRES DRILLING OUT THE (12) HOLES IN EACH PAN TO A CALCULATED DIAMETER. HOLES MUST BE DRILLED AS SPECIFIED OR CONVEYOR WILL NOT OPERATE PROPERLY.
 - 8) QUANTITY OF PLENUMS DETERMINED BY LENGTH OF CONVEYOR.
 - 9) AIR SUPPORTED CONVEYOR IS AVAILABLE IN BELT WIDTHS 18.00 THRU 72.00
 - 10) CONTACT MARTIN ENGINEERING FOR SPECIAL PLENUM LENGTHS.



INLET PLENUM DETAIL
SCALE 1/8

©Copyright 2002 Martin Engineering. All rights reserved. Covered by U. S. and foreign patents pending and issued. R and TM indicate trademarks of Martin Engineering.

MARTIN ENGINEERING
NEPONSET ILLINOIS USA

TITLE	MARTIN® S-CLASS™ AIR SUPPORTED CONVEYOR	DRAWN JAP
DATE	07/09/01	CHECKED
ENG. KJC		DATE 07/31/01
APPROVED JRB		DATE 07/31/01
SCALE	1/16	

NO.	DESCRIPTION	ECN	DATE	BY
	REVISION			

SALES DRAWING
PR07659 S36654