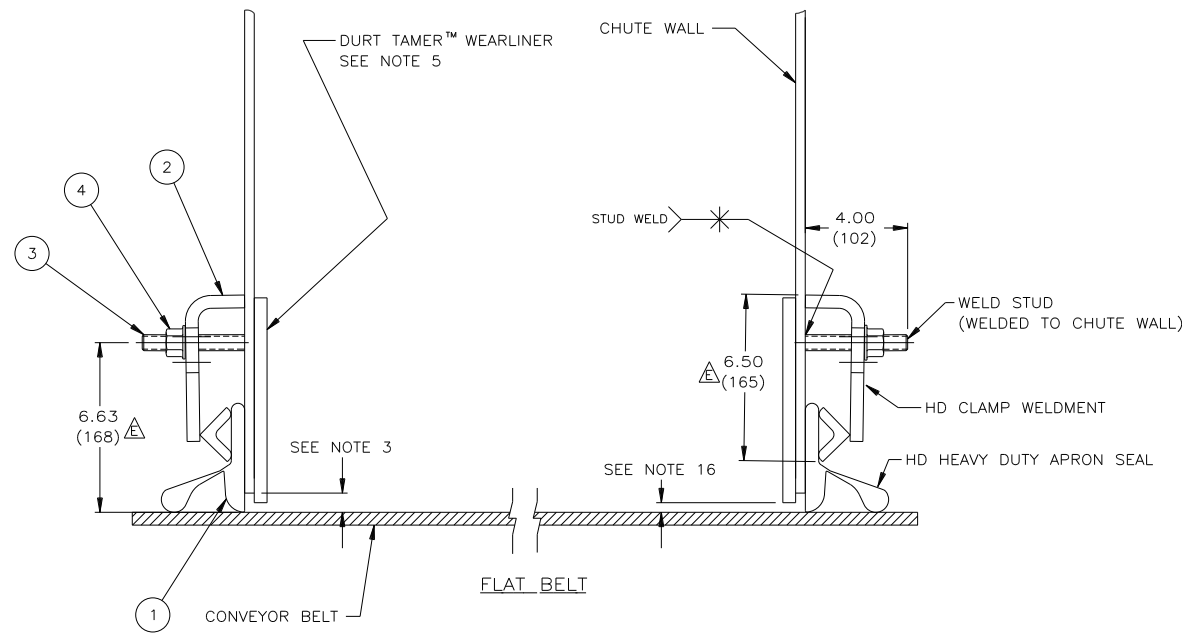
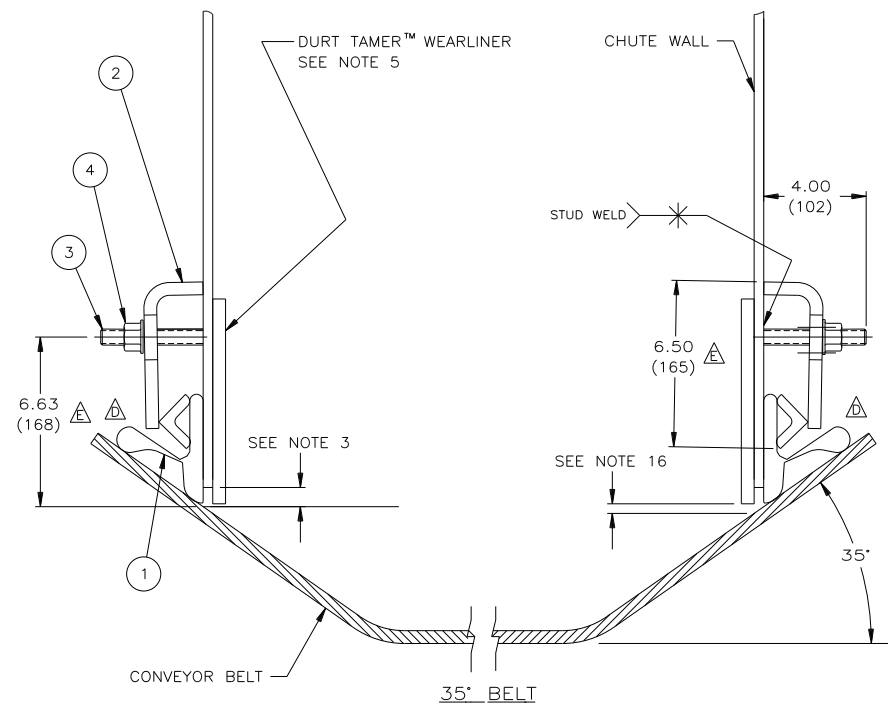
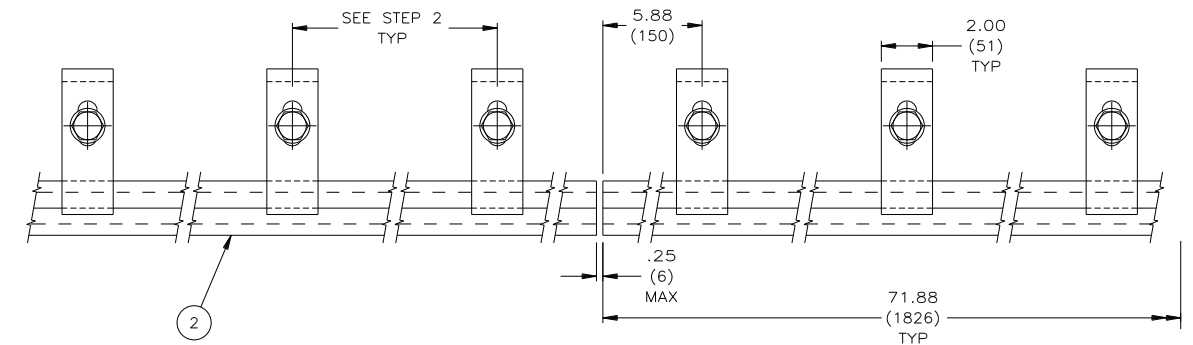
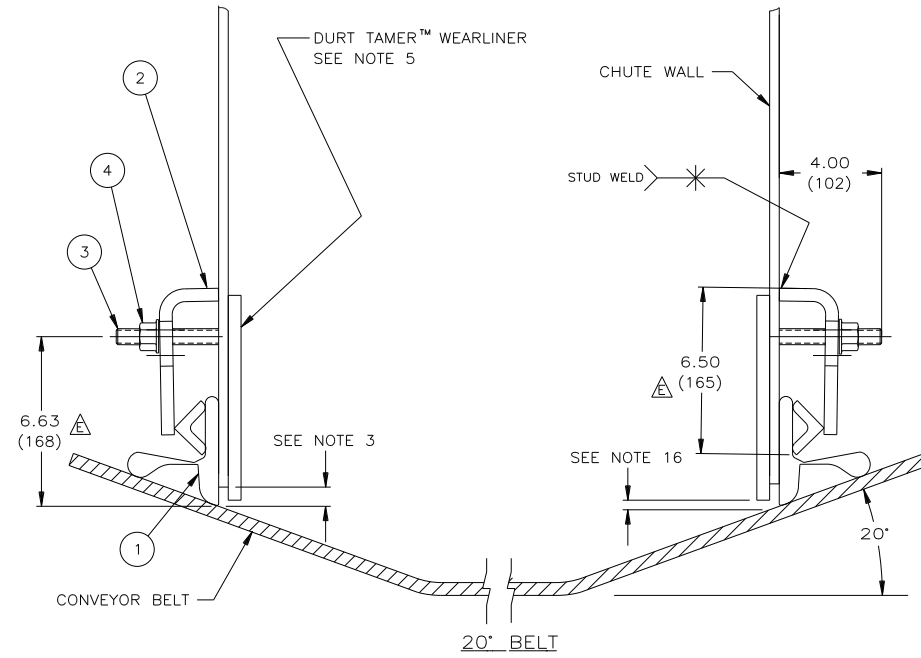
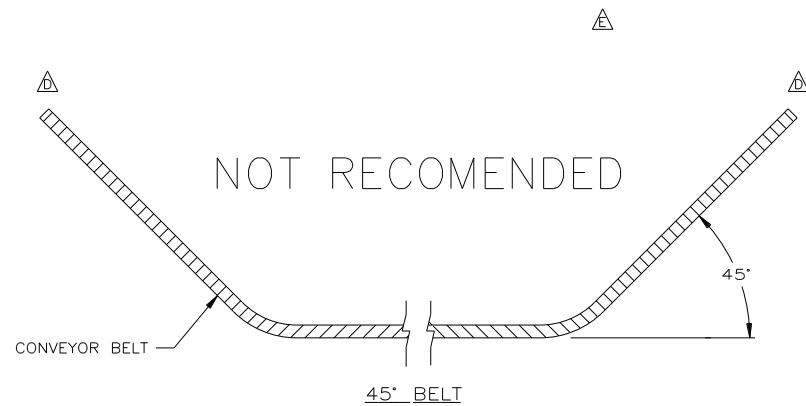


ITEM	QTY.	DESCRIPTION	PART NUMBER
1	***	APRON SEAL™ 1-PIECE HEAVY DUTY	100723
2	*	ANGLE CLAMP WLDMT HEAVY DUTY	34339
3	**	STUD 5/8-11NC X 4	34398
4	**	NUT FLANGE LOCKING 5/8-11NC	34399

- \* - EACH WELDMENT IS 71.88(1826) LONG. (1) WELDMENT REQUIRED PER EVERY 6'-0"(1829) OF HD APRON SEAL™ (ITEM 1).
- \*\* - (1) STUD (ITEM 3) AND (2) NUTS (ITEM 4) ARE SUPPLIED FOR EACH FOOT OF HD APRON SEAL™. 1 NUT IS USED TO HOLD THE ANGLE CLAMP IN PLACE ON THE STUD, THE OTHER CAN BE WELDED TO THE CHUTE WALL AND THEN INSERT THE STUD. ⚠
- \*\*\* - CUT TO LENGTH.



HD ANGLE CLAMP WELDMENT DETAIL

NOTES:

- 1) ALL DIMENSIONS ARE GIVEN IN INCHES (MM).
- 2) ALL DIMENSIONS ARE SHOWN FOR REFERENCE PURPOSES ONLY.
- 3) MARTIN ENGINEERING RECOMMENDS CHUTE WALL TO BE WITHIN .75 (19) OF BELT.
- 4) A MIN. OF 10.00 (254) VERTICAL AND 4.00 (102) HORIZONTAL CLEARANCE REQUIRED TO INSTALL HD APRON SEAL™ & HD CLAMPS.
- 5) TO PROVIDE AN EFFECTIVE SEAL, DURT TAMER™ WEARLINERS (STRAIGHT OR DEFLECTOR) ARE RECOMMENDED TO PREVENT THE MAIN LOAD FROM CONTACTING THE HD APRON SEAL™ (STRAIGHT WEARLINER SHOWN).
- 6) IF DURT TAMER™ WEARLINERS ARE BOLTED TO CHUTE WALL, HD APRON SEAL™ AND HD CLAMPS ARE TO BE MOUNTED IN A MANNER TO ALLOW EASY ACCESS TO BOLTS.
- 7) HD APRON SEAL™ IS DESIGNED AS A DUST SEAL ONLY. IT IS NOT TO BE USED AS A MATERIAL HOLDBACK OR LOAD CARRYING SURFACE.
- 8) BELT MUST NOT LIFT OFF IDLERS DURING START-UP OR WHILE BELT IS IN OPERATION.
- 9) BELT MUST TRACK PROPERLY TO PREVENT IT FROM RUNNING BEHIND HD APRON SEAL™.
- 10) CONSULT MARTIN ENGINEERING FOR INSTALLATIONS WITH UNUSUAL OR SEVERE CONDITIONS, I.E.: CONCAVE/CONVEX CURVES, EXTREME SIDE PRESSURE, UNUSUALLY FAST OR SLOW MOVING BELTS, TEMPERATURE EXTREMES, ETC.
- 11) HD APRON SEAL™ AND DURT TAMER™ WEARLINER SHOULD BEGIN AT LEAST 12.00 (305) BEFORE INLET SIDE OF CHUTE WALL.
- 12) CONTACT MARTIN ENGINEERING PRIOR TO MOUNTING THESE PRODUCTS IN ANY WAY OTHER THAN WHAT IS DEPICTED ON THIS DRAWING OR IN OPERATOR'S MANUAL.
- 13) HD ANGLE CLAMP WELDMENT (ITEM 2) IS TO BE FULLY TIGHTENED AGAINST CHUTE WALL.
- 14) HD ANGLE CLAMP WELDMENT MUST HAVE FIRM BACKING TO ENSURE PROPER CLAMP FORCE.
- 15) REFER TO OPERATOR'S MANUAL M3248 DURING INSTALLATION. THIS DRAWING NOT TO BE USED IN PLACE OF OPERATOR'S MANUAL.
- 16) .38 (10) MAX. IN IMPACT AREA, TAPERING TO .75 (19) AT EXIT AREA.

INSTALLATION INSTRUCTIONS

- ⚠ STEP 1: SCRIBE A LINE PARALLEL TO BELT SURFACE 6.63 (168) ABOVE BELT.
- STEP 2: ALONG THIS LINE, MAKE FIRST MARK 5.88 (150) FROM END OF CHUTE WALL AND MARK EVERY 12.00 (305).
- STEP 3: ON THESE MARKED CENTERS, WELD 5/8-11NC X 4 STUDS. WHEN WELDING STUDS, MAKE SURE THAT THEY ARE WELDED PERPENDICULAR TO THE CHUTE WALL TO ENSURE EVEN CLAMP CONTACT.
- STEP 4: PLACE HD APRON SEAL™ AGAINST CHUTE WALL, MAKING SURE IT IS IN CONTINUOUS CONTACT WITH BELT. PLACE HD ANGLE CLAMP WELDMENT OVER PREVIOUSLY WELDED STUDS.
- STEP 5: PUSH HD ANGLE CLAMP WELDMENT TIGHT AGAINST APRON SEAL™ AND INSTALL LOCKING NUTS. TIGHTEN NUTS TO 40 FT/LBS.

INSTALLATION DETAIL

ALL DIMENSIONS TYPICAL EACH SIDE OF CONVEYOR ON ALL LAYOUTS

NO.	DESCRIPTION	ECN	DATE	BY
E	CHG DIM FROM 6.45 TO 6.50(4 PLACES), 7.37 TO 6.63 (3 PLACES)/CHG P/N FROM 34338-XXXX TO 100723 IN THE BOM/UPDATE P/N 34339 PICT DUE TO CHG/CHG NOTE	9929	05/22/01	CGH
D	(MD0342) REVISED LEG LENGTH	----	09/29/97	LTB
C	CHANGED DESCRIPTION FROM HEAVY DUTY TO EXTRA HEAVY DUTY	7211	01/16/96	LTB
B	CHANGED DESCRIPTION FROM 5/8-11NC X 3.00 TO 5/8-11NC X 4.00/CHANGED NOTE **	7014	10/31/95	JAP
A	ADDED FLAT, 20°, AND 45° BELTS	----	10/23/95	KJC

© Copyright 1995 Martin Engineering. All rights reserved. Covered by U.S. and foreign patents pending and issued. Ⓞ and ™ indicate trademarks of Martin Engineering.

		NEPONSET ILLINOIS USA
TITLE	INSTALLATION DRAWING FOR HEAVY DUTY APRON SEAL™ & HD ANGLE CLAMP WELDMENT	DRAWN K.J.C. DATE 10/23/95
NO.	DESCRIPTION	CHECKED DATE 09/29/97
NO.	DESCRIPTION	APPROVED J.A.J. DATE 09/29/97
NO.	DESCRIPTION	SCALE 1/4"=1